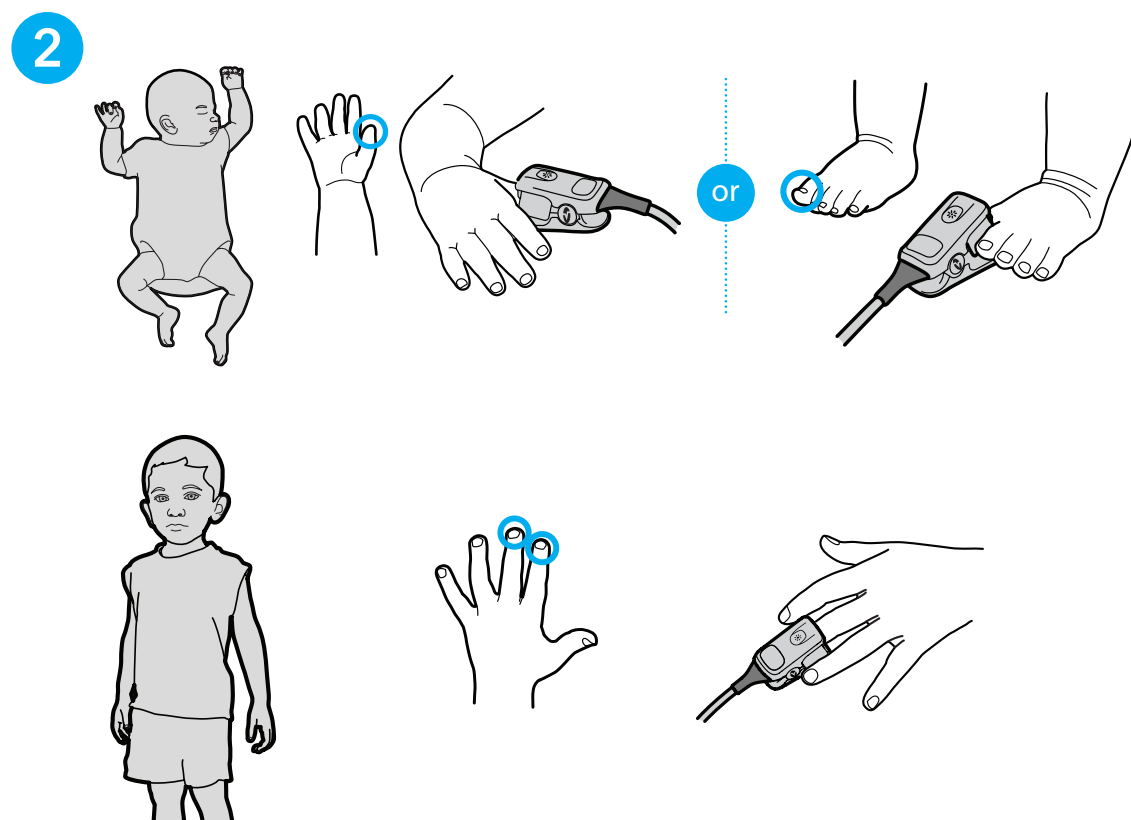


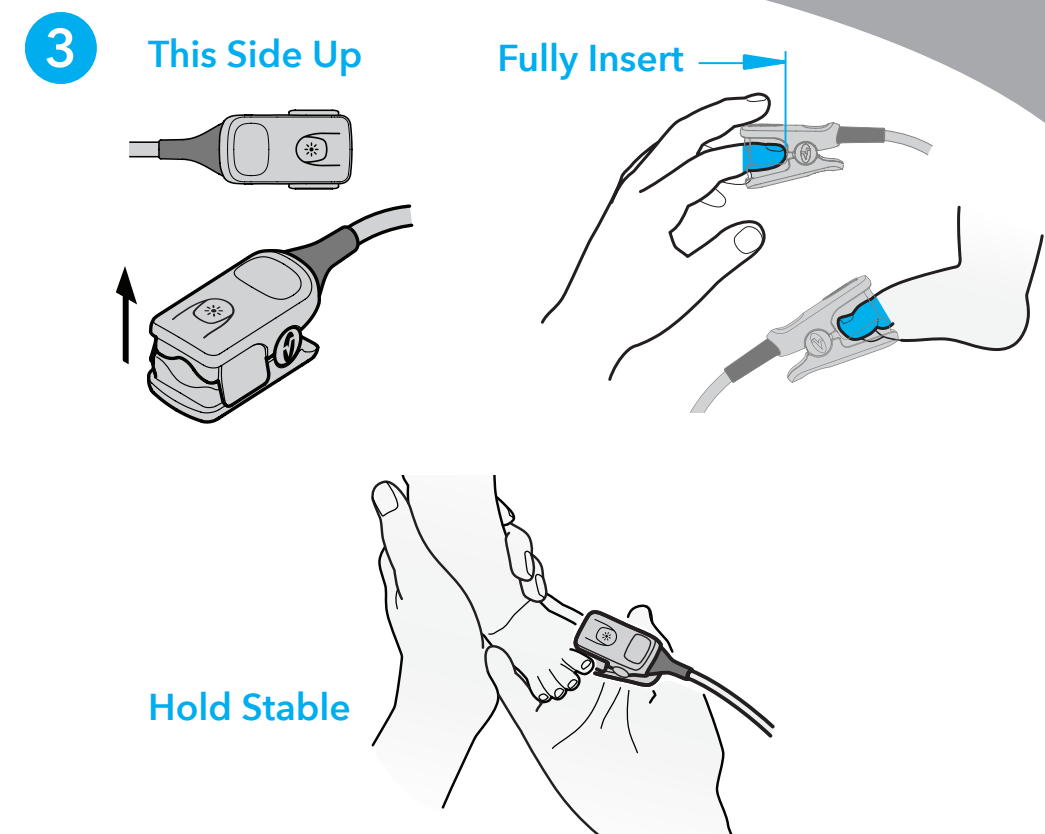
Screening with Rad-G™



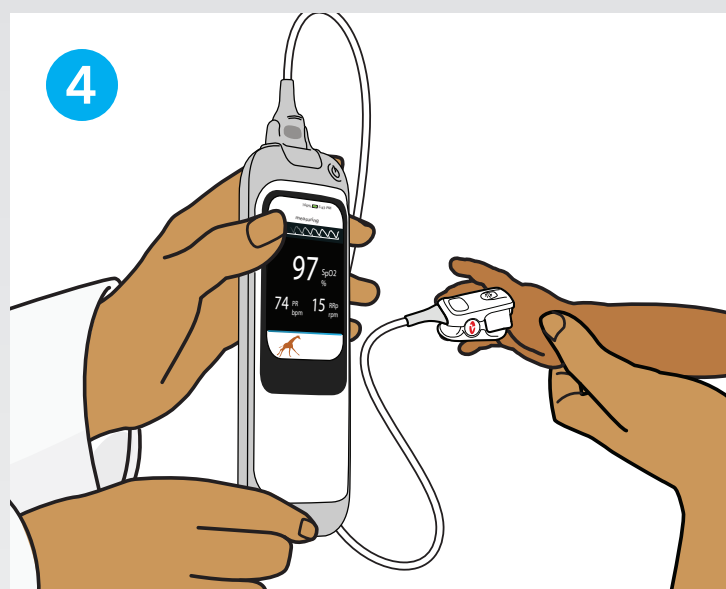
1 Use Rad-G device in SpO₂/ Respiratory Rate screening mode



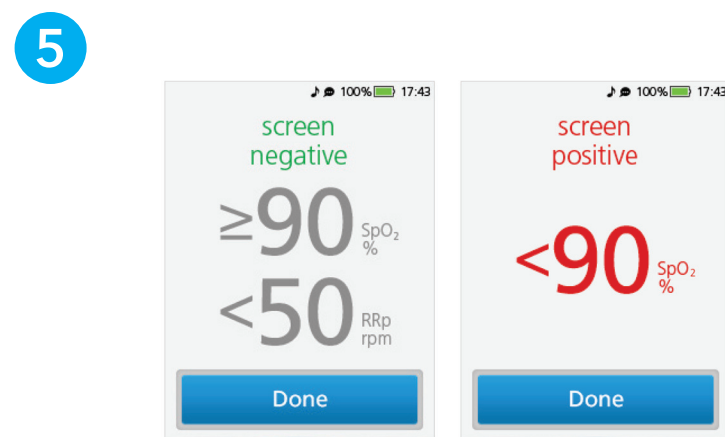
2 Sensor placement



3 Placement tips

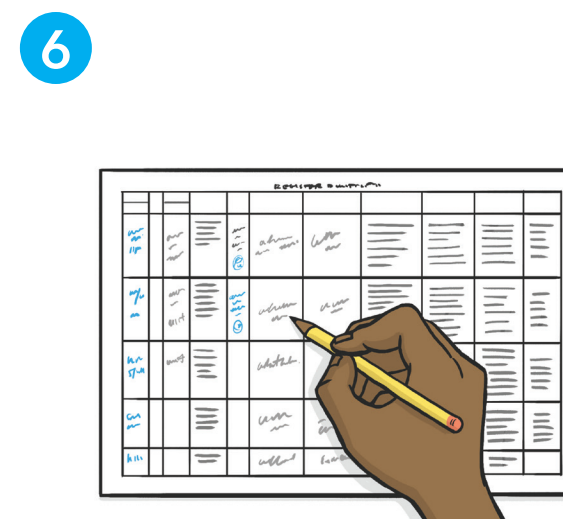


4 To keep patient still, show screen animation during measurement and hold hand or foot stable



5 **Negative Screen** Within acceptable range. **Positive Screen** Condition suspected. Values are outside acceptable range.

Read results



6 Refer to local protocol to determine to treat, refer, or release

Notes

Not intended to replace the Operator's Manual.
For professional use. See instructions for use for full prescribing information, including indications, contraindications, warnings, and precautions.