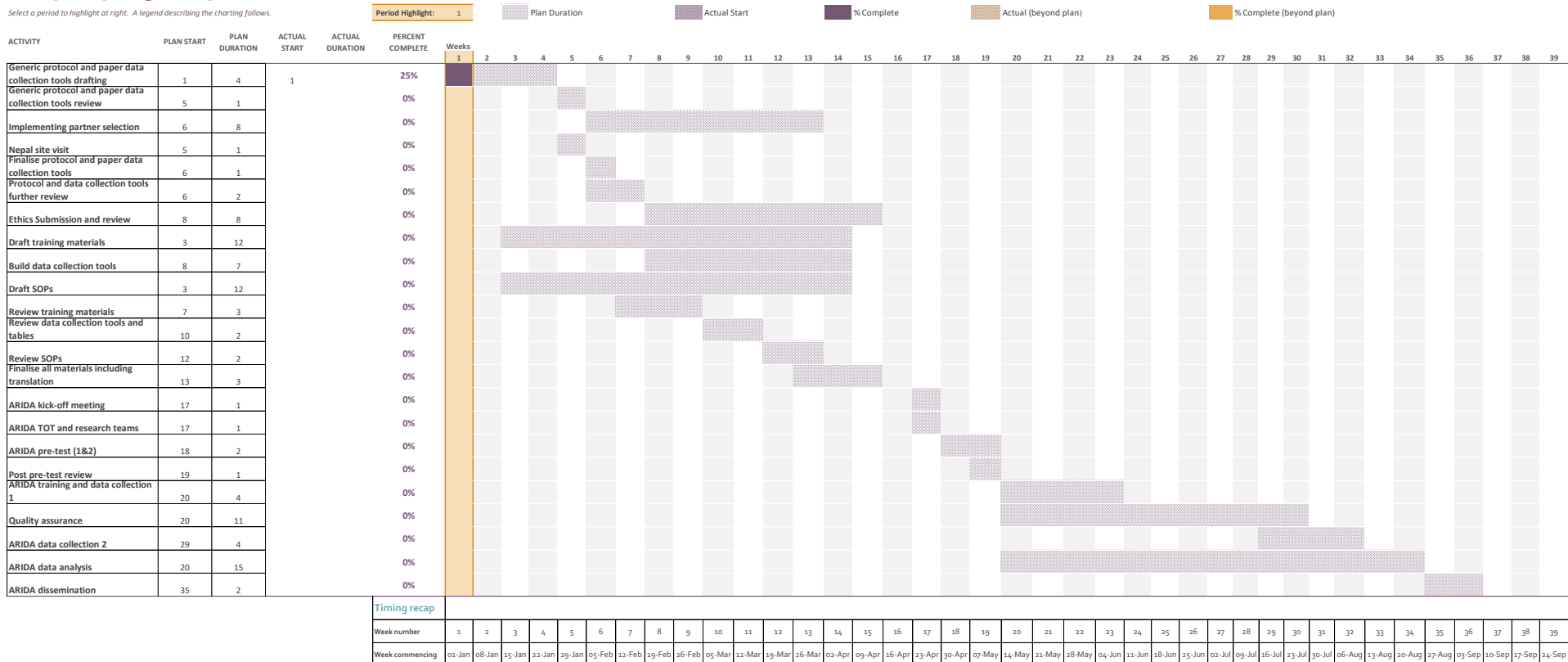


Annex 4: Nepal Project Plan- ChARM

The ChARM sub-study implementation is expected to kick-off on in April 2018, with data collection continuing until July 2018, followed by data analysis and dissemination by August 2018.

Nepal project plan - ChARM (start date 01/01/2018)

Select a period to highlight at right. A legend describing the charting follows.

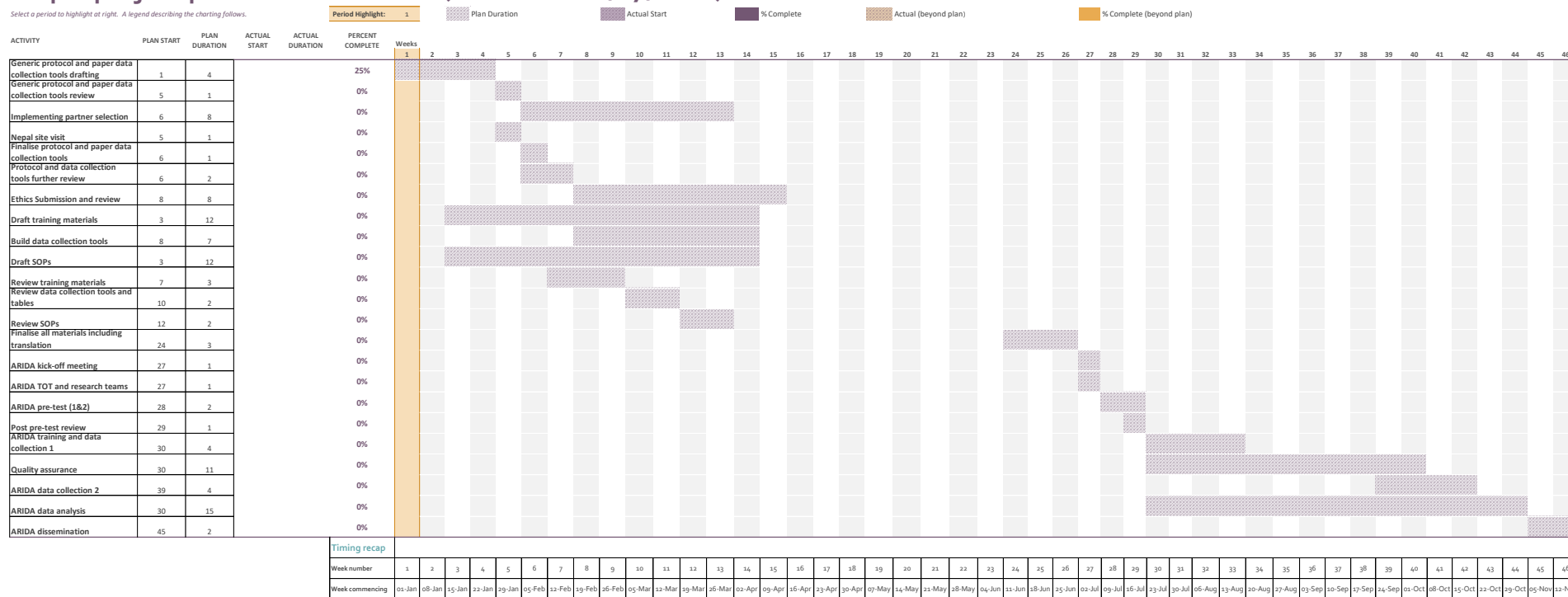


Annex 5: Nepal Project Plan- Masimorad G

The Rad-G sub-study implementation is expected to kick-off on in July 2018, with data collection continuing until September 2018, followed by data analysis and dissemination by November 2018.

Nepal project plan - Masimorad G (start date 02/07/2018)

Select a period to highlight at right. A legend describing the charting follows.

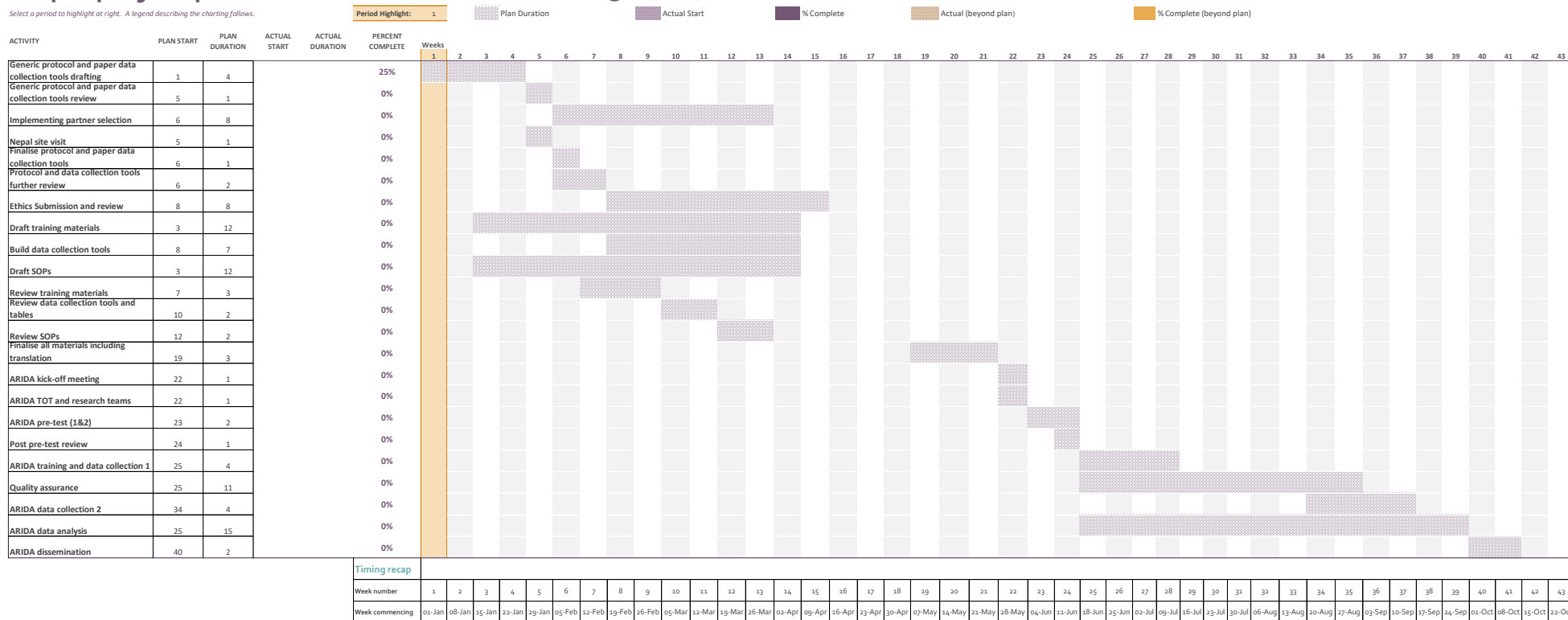


Annex 6: Nepal Project Plan- ARI Timer

The MK2 ARI timer sub-study implementation is expected to kick-off on in May 2018, with data collection continuing until August 2018, followed by data analysis and dissemination by October 2018.

Nepal project plan - ARI Timer (start date 28/05/2018)

Select a period to highlight at right. A legend describing the charting follows.



Implementation overview

Study implementation workplan

Training, pre-test, debrief and data collection plan

